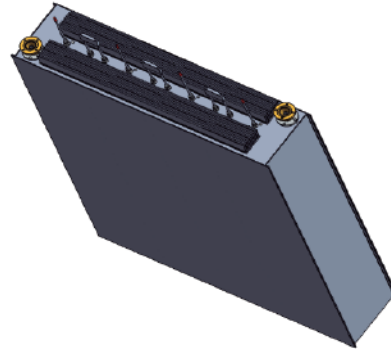


# VHF B.I 4- POLE DTV BANDPASS FILTER (54 - 88 MHz) HIGH POWER

## FDTV04C3A4

### Features

- 4 Pole
- Temperature Stabilized



### Specifications

Frequency Range - MHz	54 - 88
Maximum Power - KW	10
Input/Output Impedance - $\Omega$	50
Number of Cavities	4
Bandwidth - MHz	6
Temperature Stability	<4kHz/K
Max Operating Temperature	65° (149°F)
Input / Output Connector	EIA 1 5/8"
Dimensions	49x12x78 inches • 1243 x 306 x 1986 mm

### Tuning data

Insertion Loss	CF	< 0.25dB
	C.F. $\pm 2.7$ MHz	< 0.38dB
Selectivity	C.F. $\pm 3.5$ MHz	> 2.5 dB
	C.F. $\pm 6.0$ MHz	> 20 dB
	C.F. $\pm 9.0$ MHz	> 36 dB
Return Loss / VSWR		> 25dB / <1.15
Group Delay Variation		< 150 ns

